



ok GO

The DMEI Global Ophthalmology Program

Jeremy F Tan, MD

Clinical Associate Professor



Dean McGee Eye Institute

Department of Oculofacial Plastic and Reconstructive surgery

608 Stanton L Young Boulevard | Oklahoma City, OK 73104

Oklahoma University Health Sciences Center

Financial Disclosures

- Speaker Bureau
 - Tepezza
 - Kerecis

Goals

- What we are doing
- Why we are doing it
- Considerations while there and thereafter

Goals

- What we are doing
- Why we are doing it
- Considerations while there and thereafter

A photograph of the Dean McGee Eye Institute building. The building is a multi-story structure with a light-colored brick facade. The name "Dean McGee EYE INSTITUTE" is prominently displayed on the upper left side of the building, accompanied by a red and black logo consisting of three curved lines. The building features several windows and a large overhanging section on the right side. The sky is clear and blue, and the foreground shows a grassy area and a paved walkway.

Dean McGee
EYE INSTITUTE







Mission

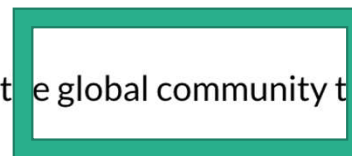
The Dean McGee Eye Institute is dedicated to serving all Oklahomans and the global community through excellence and leadership in patient care, education, and vision research.





Mission

The Dean McGee Eye Institute is dedicated to serving all Oklahomans and the global community through excellence and leadership in patient care, education, and vision research.





1.1 billion people live with vision loss

In 2020, the global population was 7.79 billion.²

43 million people
are **blind** (crude prevalence: 0.5%).

295 million people
have **moderate to severe vision impairment** (crude prevalence: 3.7%).

258 million people
have **mild vision impairment** (crude prevalence: 3.3%).

510 million people
have **near vision impairment** (crude prevalence: 6.5%)

1. Bourne, R. et al. Trends in prevalence of blindness and distance and near vision impairment over 30 years: an analysis for the Global Burden of Disease Study. *Lancet Glob. Heal.* (2020) doi:10.2139/ssrn.3582742.

2. United Nations Department of Economic and Social Affairs Population Division. World Population Prospects 2019: Highlights. (2019).

Countries with the highest vision loss rates

Country	Vision loss category				Total
	Blindness	Moderate to severe	Mild	Near	
Tanzania	1.1%	3.2%	4.5%	16.3%	25.1%
Niger	1.2%	3.6%	4.8%	13.2%	22.8%
Zimbabwe	0.8%	3.0%	3.7%	15.2%	22.8%
Nepal	0.5%	5.1%	2.8%	18.8%	27.2%
India	0.9%	6.6%	4.0%	11.3%	22.7%
Lesotho	1.1%	2.6%	3.7%	15.1%	22.4%
Eswatini	1.0%	2.5%	3.6%	14.6%	21.7%
South Africa	0.8%	2.3%	3.5%	15.0%	21.6%
Namibia	0.8%	2.5%	3.5%	14.3%	21.1%
Botswana	1.0%	2.4%	3.5%	14.1%	21.0%

1. Bourne, R. et al. Trends in prevalence of blindness and distance and near vision impairment over 30 years: an analysis for the Global Burden of Disease Study. *Lancet Glob. Heal.* (2020) doi:10.2139/ssrn.3582742.

2. United Nations Department of Economic and Social Affairs Population Division. World Population Prospects 2019: Highlights. (2019).

Countries with the highest vision loss rates

Country	Vision loss category				Total
	Blindness	Moderate to severe	Mild	Near	
Tanzania	1.1%	3.2%	4.5%	16.3%	25.1%
Niger	1.2%	3.6%	4.8%	13.2%	22.8%
Zimbabwe	0.8%	3.0%	3.7%	15.2%	22.8%
Nepal	0.5%	5.1%	2.8%	18.8%	27.2%
India	0.9%	6.6%	4.0%	11.3%	22.7%
Lesotho	1.1%	2.6%	3.7%	15.1%	22.4%
Eswatini	1.0%	2.5%	3.6%	14.6%	21.7%
South Africa	0.8%	2.3%	3.5%	15.0%	21.6%
Namibia	0.8%	2.5%	3.5%	14.3%	21.1%
Botswana	1.0%	2.4%	3.5%	14.1%	21.0%

1. Bourne, R. et al. Trends in prevalence of blindness and distance and near vision impairment over 30 years: an analysis for the Global Burden of Disease Study. *Lancet Glob. Heal.* (2020) doi:10.2139/ssrn.3582742.

2. United Nations Department of Economic and Social Affairs Population Division. World Population Prospects 2019: Highlights. (2019).

Impact on **vision** ...

... Impact on **life**

Impact on vision

- QOL
 - In some studies blindness is a worse fear than cancer
 - Lower rates of workforce production
 - Higher rates of depression and anxiety
- Older populations
 - Social isolation
 - Difficulty walking
 - Increase risk of falls and hip fractures
 - Compounds problems with mobility and cognitive decline

Impact on vision

- QOL
 - In some studies **blindness is a worse fear than cancer**
 - Lower rates of workforce production
 - Higher rates of depression and anxiety
- Older populations
 - Social isolation
 - Difficulty walking
 - Increase risk of falls and hip fractures
 - Compounds problems with mobility and cognitive decline

Impact on vision

- QOL
 - In some studies blindness is a worse fear than cancer
 - Lower rates of workforce production
 - Higher rates of depression and anxiety
- **Older populations**
 - Social isolation
 - Difficulty walking
 - Increase risk of falls and hip fractures
 - Compounds problems with mobility and cognitive decline

Social implications

- Increased rates of violence and abuse
- Bullying
- Sexual violence
- Motor vehicles accidents
- Inability to take care of other medical conditions
 - Unable to read labels of meds etc.

Social implications

- Increased rates of violence and abuse
- Bullying
- Sexual violence
- Motor vehicles accidents
- Inability to take care of other medical conditions
 - Unable to read labels of meds etc.

Ripple effect

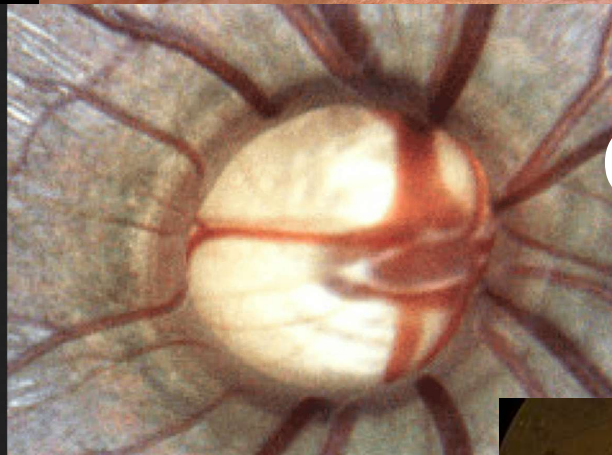
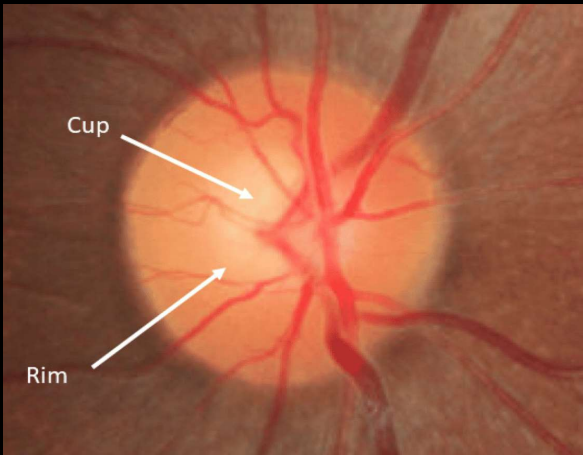
- Caregivers
 - Much better QOL for those with visual impairment with good family support
 - Higher rates of depression and anxiety for caregiver
 - Augmented by lack of finance

Ripple effect

- Caregivers
 - Much better QOL for those with visual impairment with good family support
 - Higher rates of depression and anxiety for caregiver
 - Augmented by lack of finance

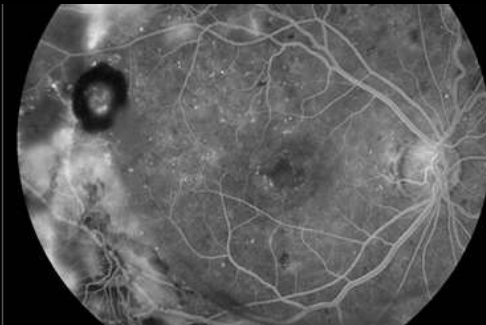
BIG THREE

Cataracts



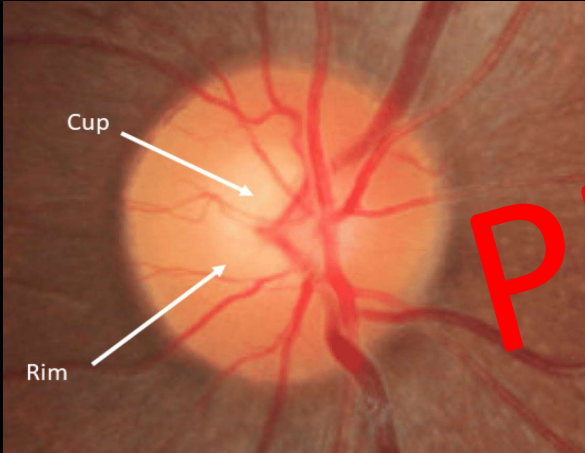
Glaucoma

Diabetes



BIG THREE

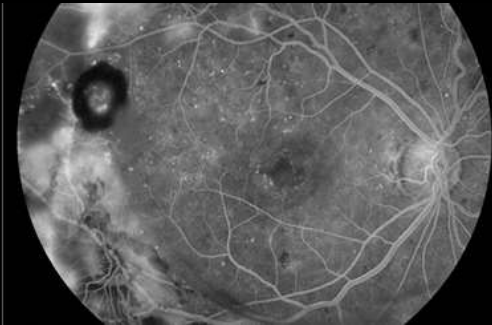
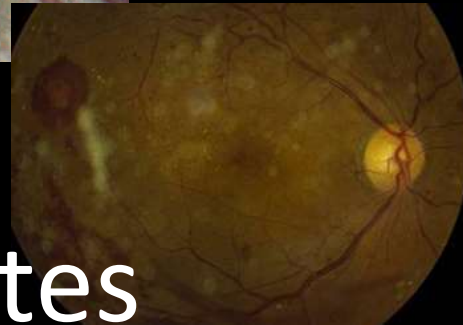
Cataracts

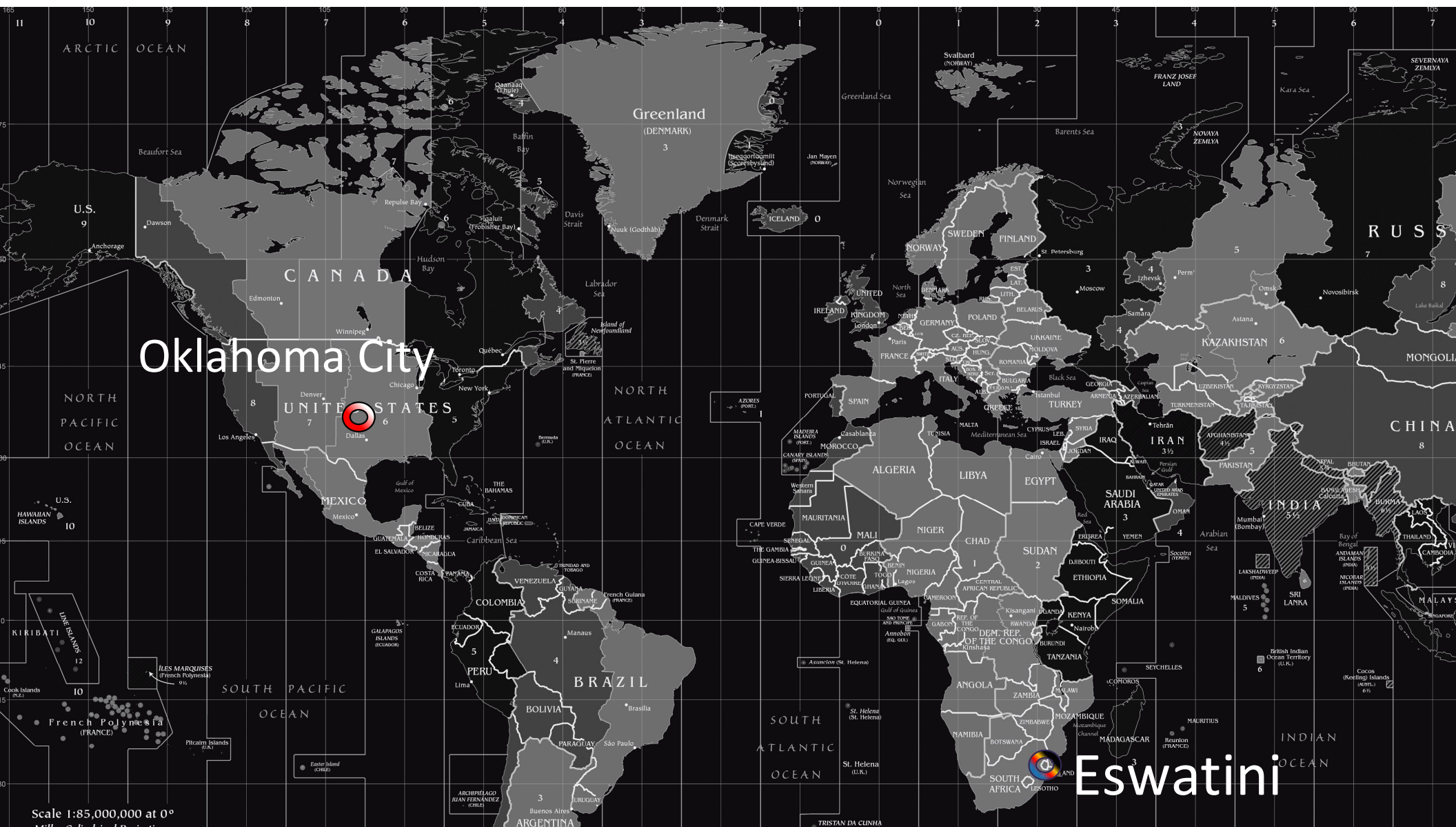


Glaucoma

PREVENTABLE

Diabetes





Oklahoma City

Eswatini

Scale 1:85,000,000 at 0°



Bradley K Farris, MD

NeuroOphthalmologist



Bradley K Farris, MD

NeuroOphthalmologist

Global Eye Care Specialist



Cheng Du







Eswatini

Jonathon Pons, MD

Comprehensive Ophthalmologist



Jonathon Pons, MD

Comprehensive Ophthalmologist

Renaissance Man



Good Shepherd Eye Clinic

Siteki, Eswatini



Eye Clinic

Monday, Tuesday, Wednesday, Friday 08h00 to 16h00 (doctors are only available on Wednesday by appointment)

St. Theresa's Eye Clinic

Manzini, Eswatini



Eye Clinic

Monday and Friday 08h00 to 16h00 (doctors are only available on Tuesday by appointment)









Why do
we
GO?



What
do
we
BRING?



GIVE

**A MAN A FISH
AND YOU FEED HIM FOR A DAY**

TEACH

**A MAN TO FISH AND YOU
FEED HIM FOR A
LIFETIME**

GIVE

A MAN A FISH

AND YOU FEED HIM FOR A DAY

TEACH

A MAN TO FISH AND YOU

FEED HIM FOR A

LIFETIME

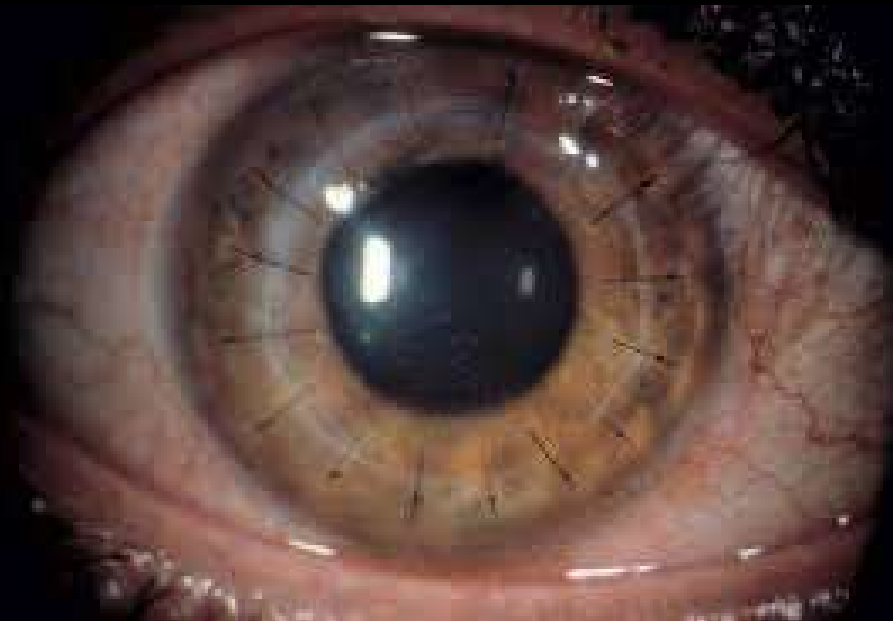
SUSTAINABILITY

Giving some fish



RESOURCES







ESTABLISHED CLINICS

VOLUME







REMOTE ACCESS CLINICS



VOLUME















OPERATE

PROVIDING

SUBSPECIALITY SERVICE





PLAN

FOR FUTURE NEEDS





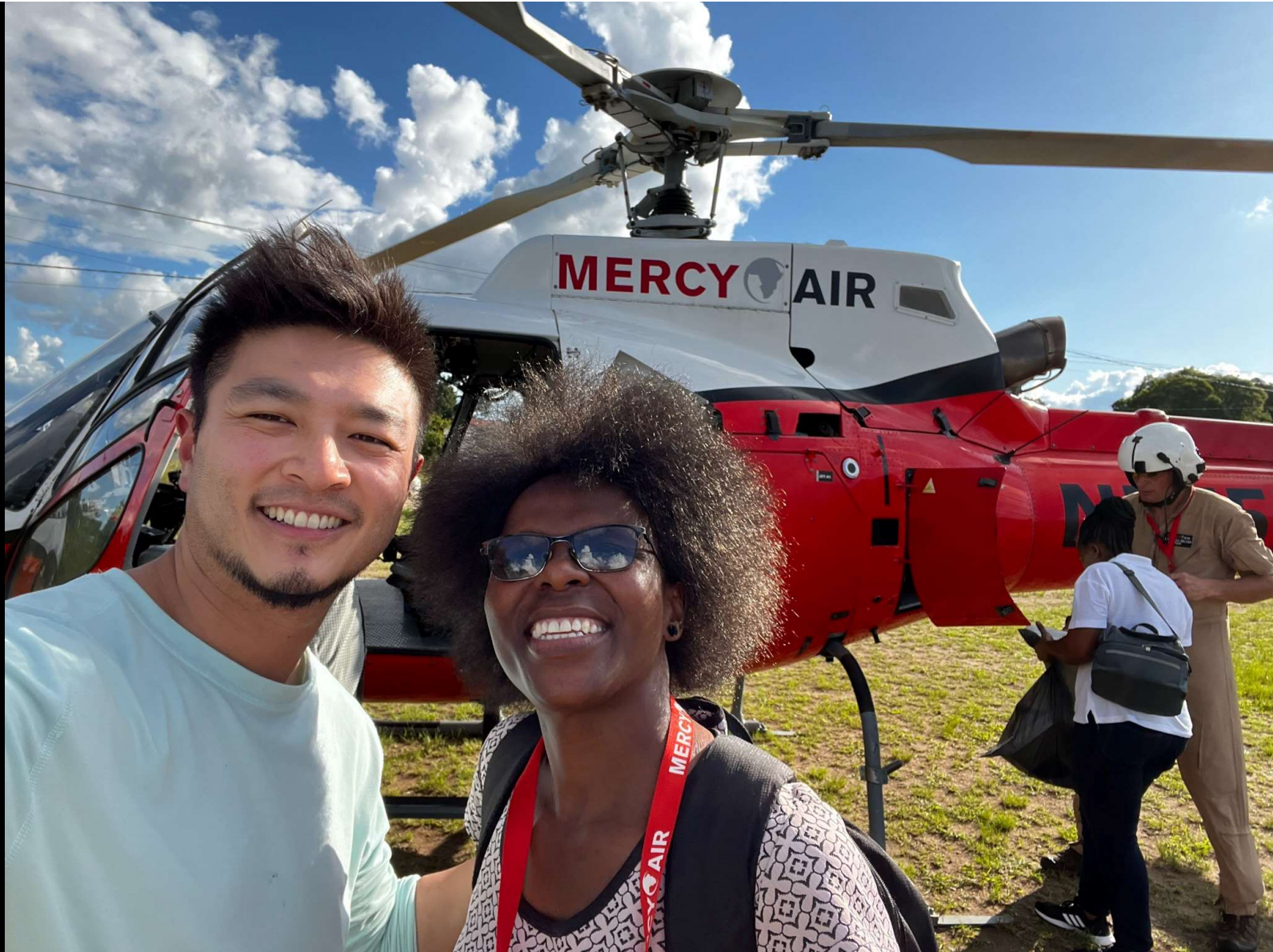




CONNECT WITH THE

PEOPLE

OF ESWATINI





































G I V E

**A MAN A FISH
AND YOU FEED HIM FOR A DAY;**

T E A C H

**A MAN TO FISH AND YOU
FEED HIM FOR A LIFETIME**







thank you
siyabonga

Thank You



Jeremy-tan@dmei.org

405-271-1096

Dean McGee Eye Institute
Oklahoma City, OK
USA

